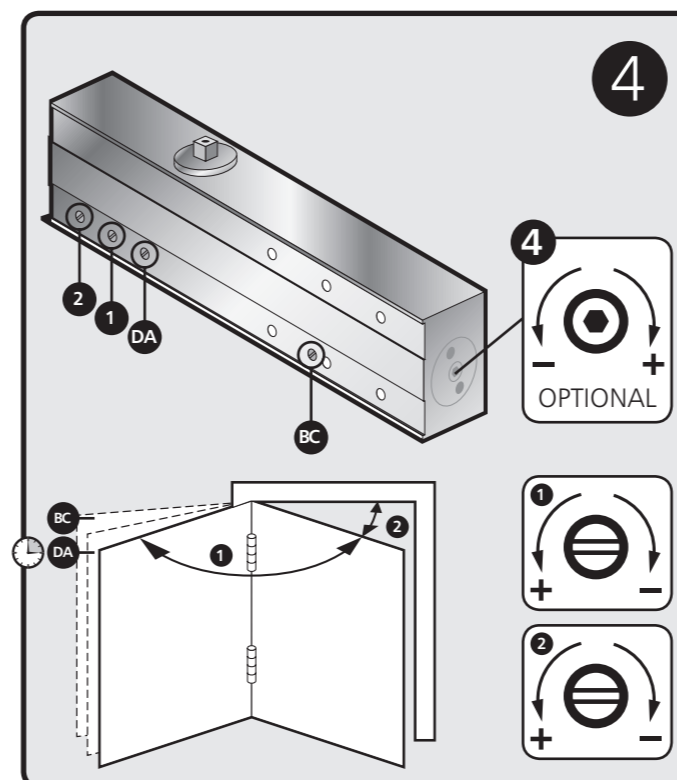
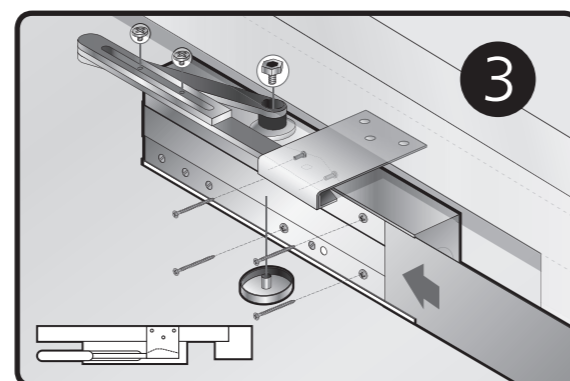
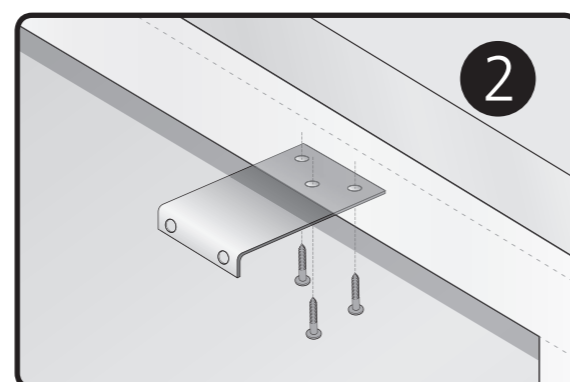
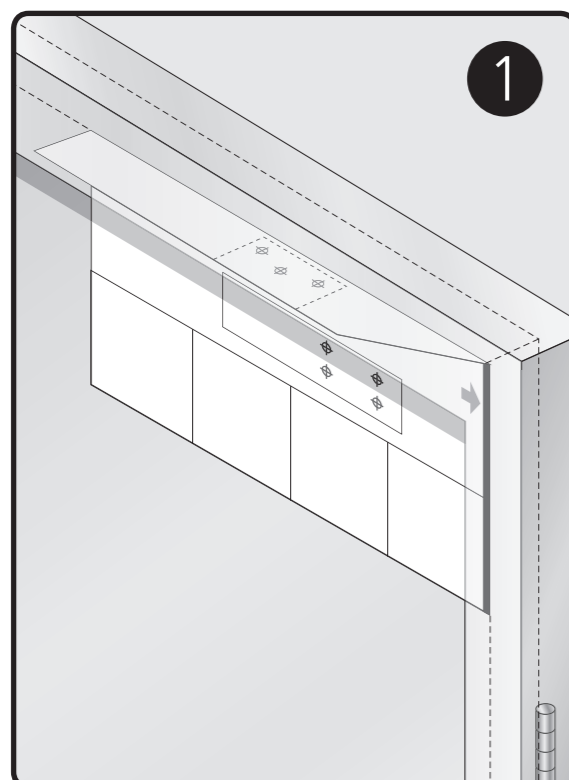


FOLD 2

FOLD 1



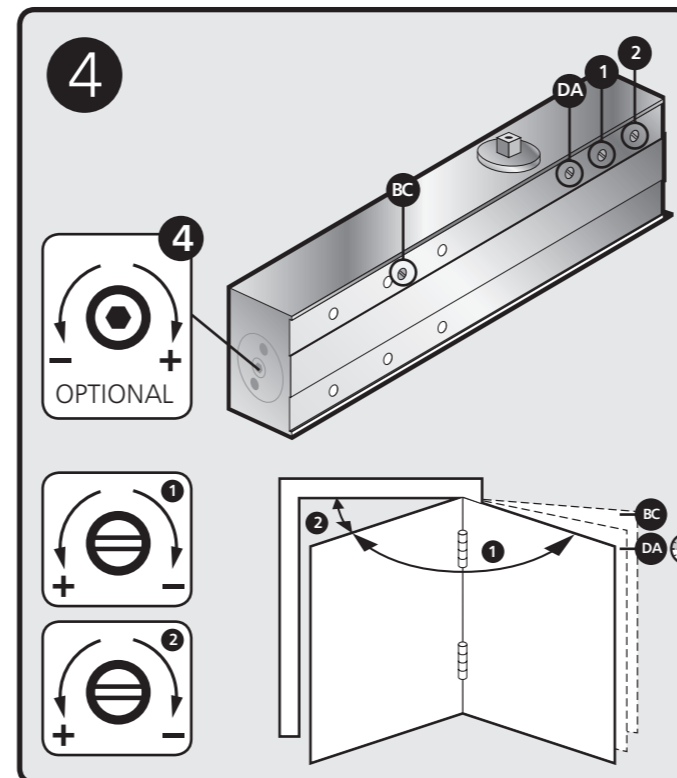
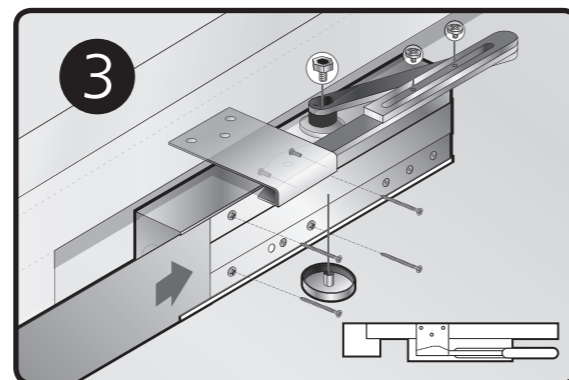
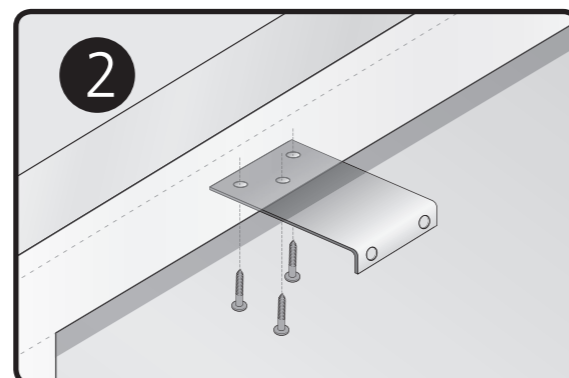
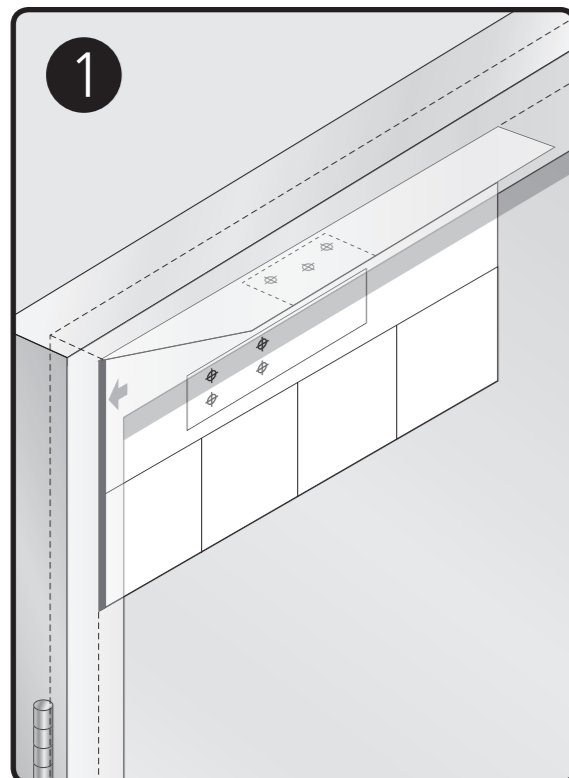
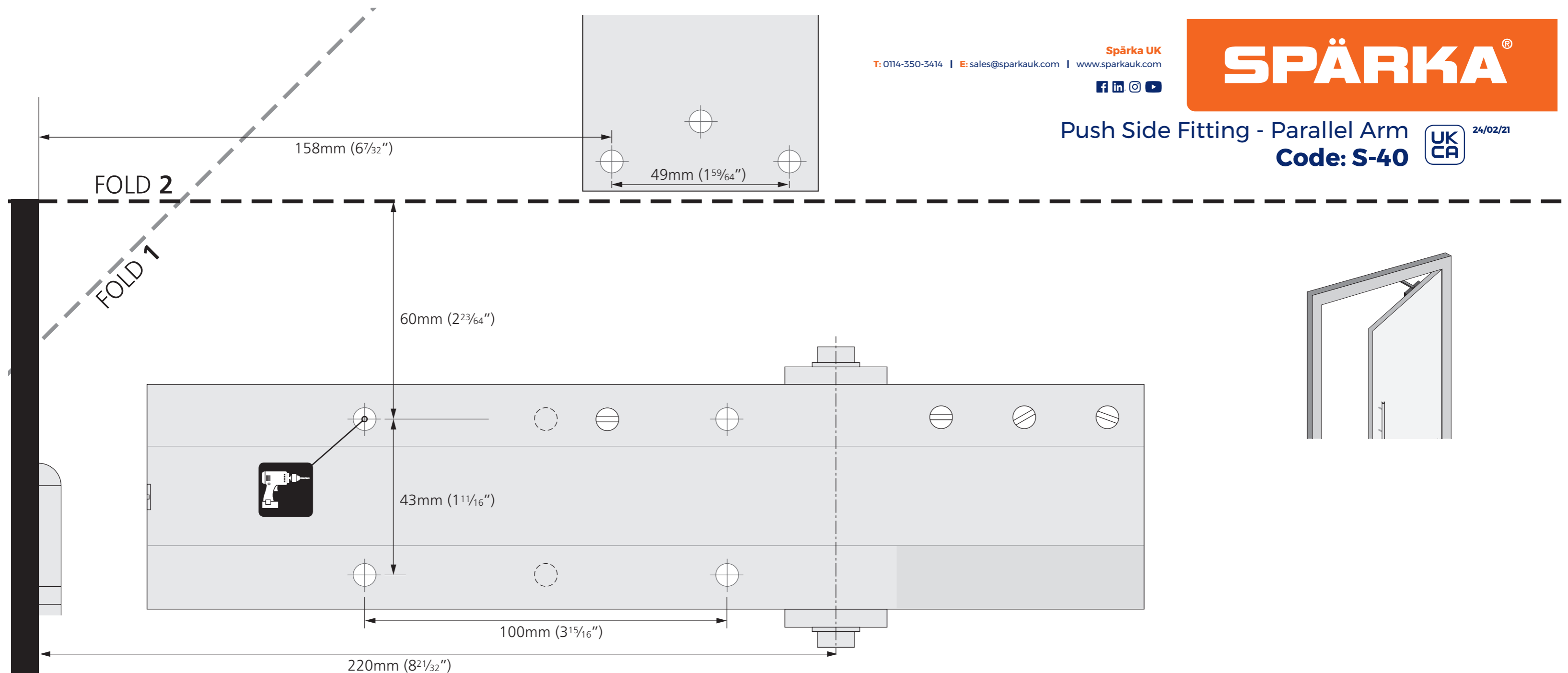
2-6 Power Adjustment

4	No. of turns	EN Size	Max. door width	Max. opening angle	Max weight
	-4	2	850m m	180°	45
	-2	3	950m m	180°	60
	*0	4	1100m m	180°	80
	+3	5	1250m m	180°	110

* FACTORY PRE-SET ■ EN2 NOT SUITABLE FOR FIRE DOORS

THE PINION BOLT MUST BE TIGHTENED TO 12NM

PRINT ON A2 FOR 1:1 SCALE
PLEASE ENSURE YOU PRINT AT 100% SCALE WITH NO REDUCTION OR ENLARGEMENT ON YOUR PRINTER.



2-6 Power Adjustment

4				
No. of turns	EN Size	Max. door width	Max. opening angle	Max weight
-4	2	850m m	180°	45
-2	3	950m m	180°	60
*0	4	1100m m	180°	80
+3	5	1250m m	180°	110

* FACTORY PRE-SET ■ EN2 NOT SUITABLE FOR FIRE DOORS

THE PINION BOLT MUST BE TIGHTENED TO 12NM

PRINT ON A2 FOR 1:1 SCALE
 PLEASE ENSURE YOU PRINT AT 100% SCALE WITH NO REDUCTION OR ENLARGEMENT ON YOUR PRINTER.