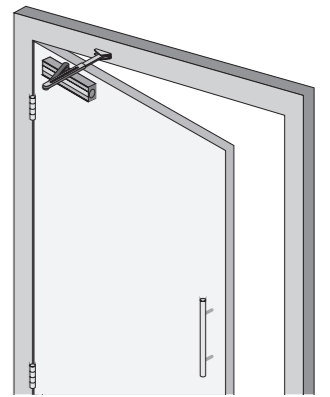
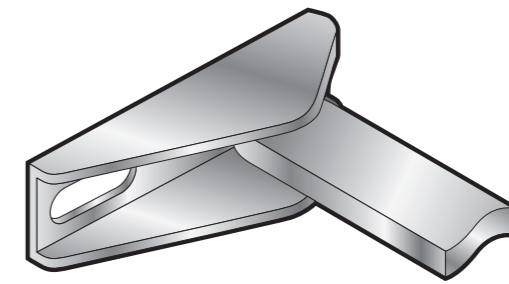


24/02/21



Pull Side Fitting
Code: S-40



222mm (8^{7/64}"")

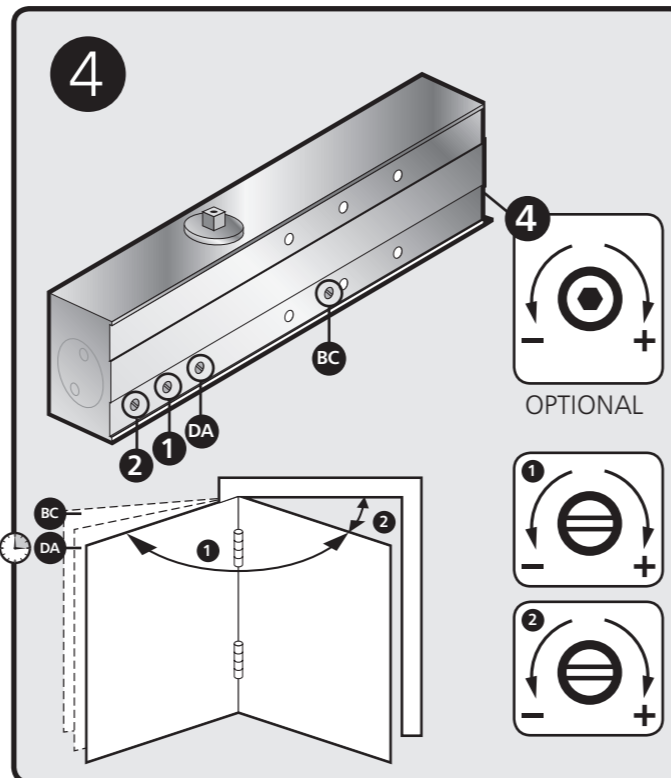
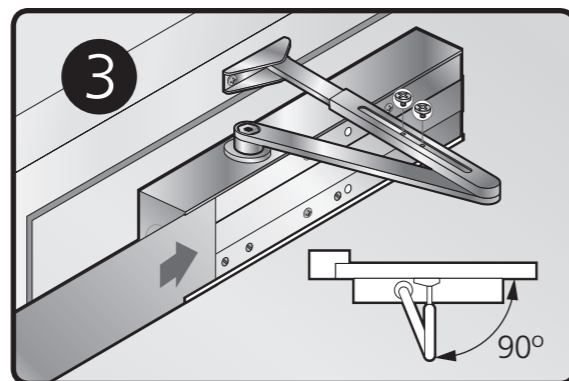
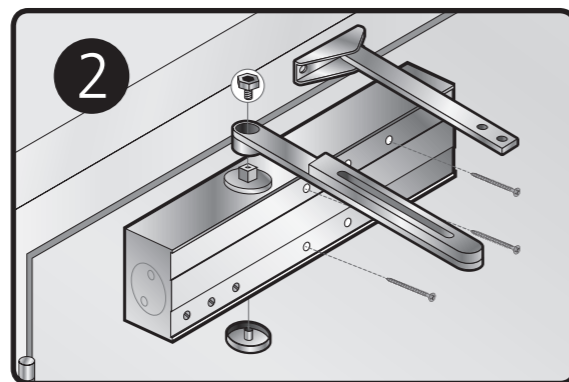
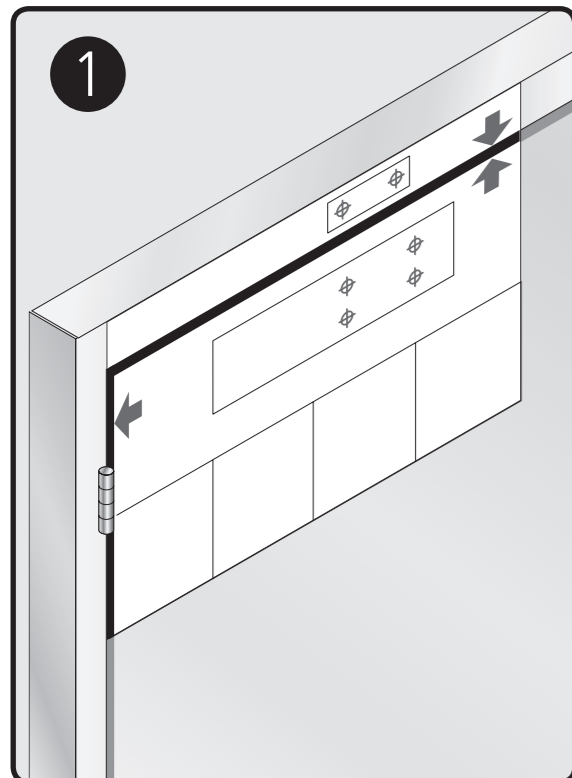
45mm (1^{49/64}"")

39mm (1^{17/32}"")

43mm (1^{11/16}"")

232mm (9^{9/64}"")

100mm (3^{15/16}"")



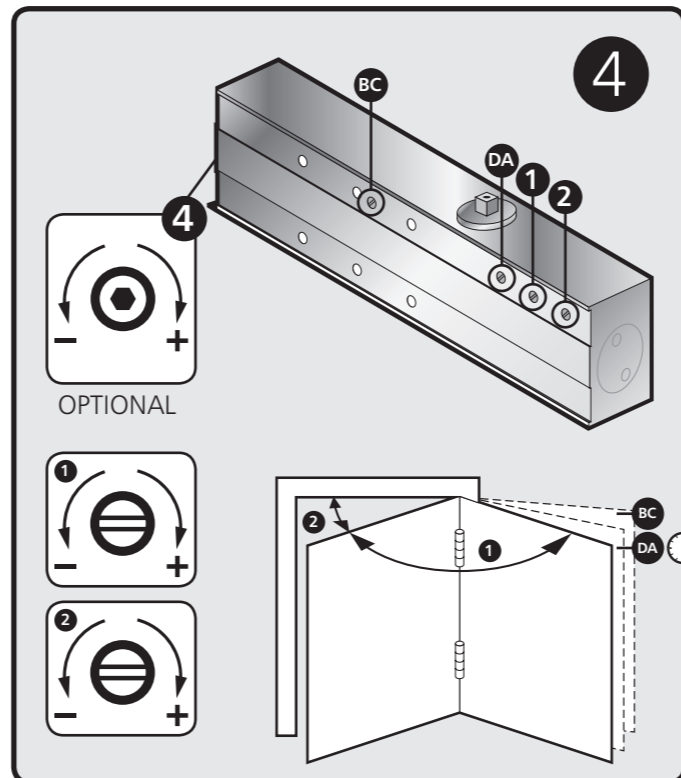
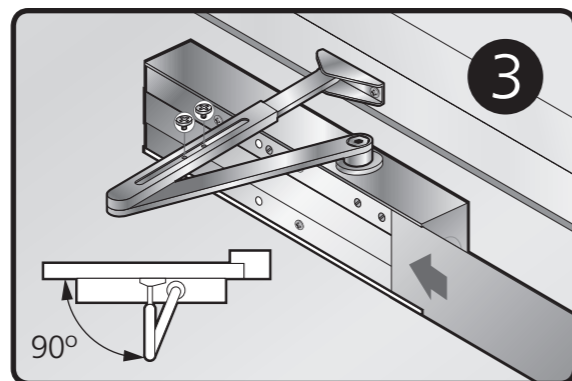
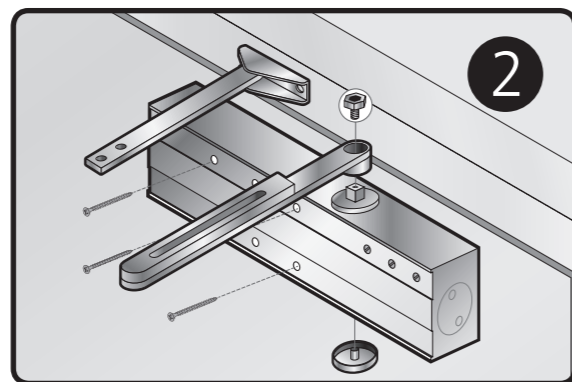
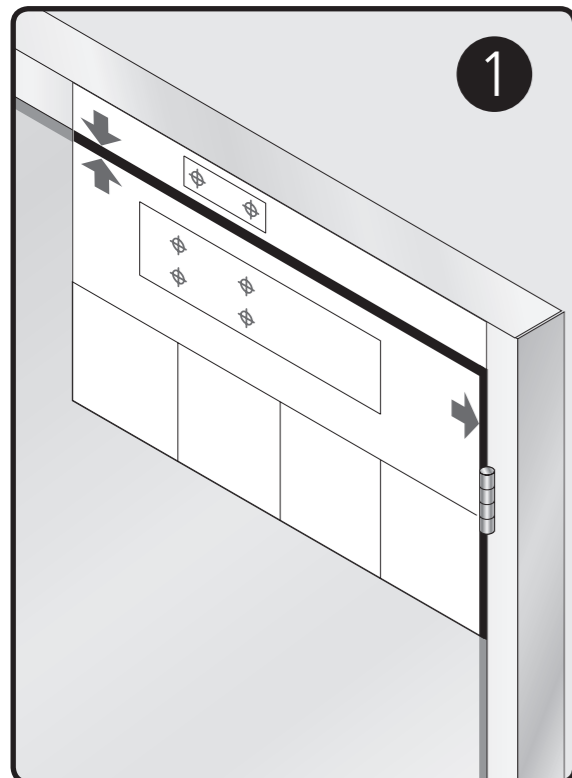
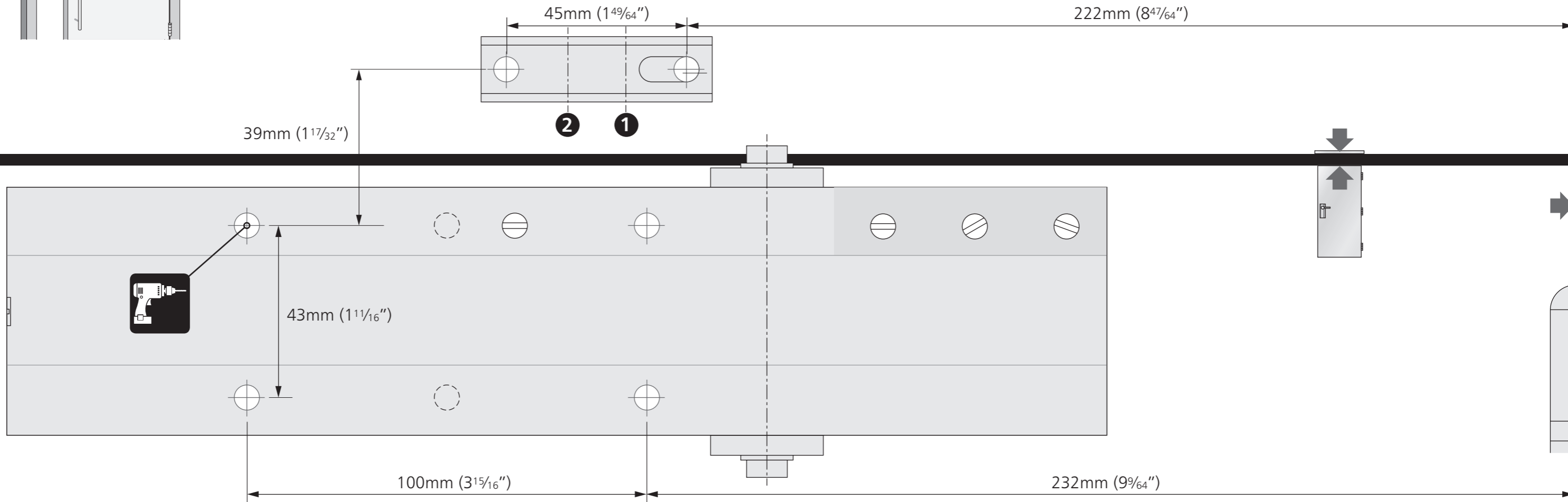
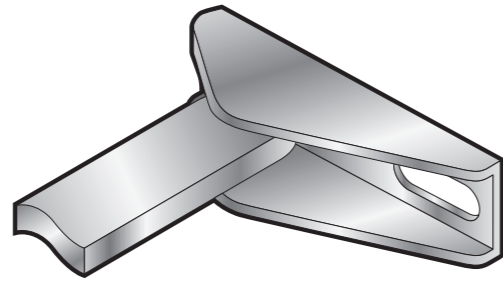
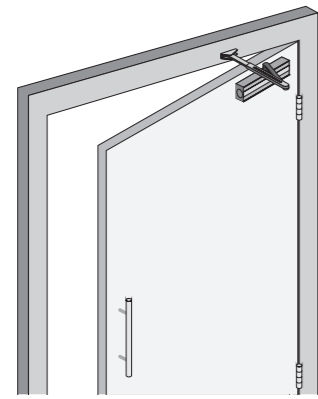
EN 2-6 Power Adjustment

4					
No. of turns	EN Size	Shoe Position	Max. door width	Max. opening angle	Max weight
-5	2 [■]	2	850mm	180°	45
*0	3	2	950mm	180°	60
*0	4	1	1100mm	180°	80
+3	5	1	1250mm	180°	110
+8	6	1	1400mm	110°	120

* FACTORY PRE-SET ■ EN2 NOT SUITABLE FOR FIRE DOORS

THE PINION BOLT MUST BE TIGHTENED TO 12NM

PRINT ON A2 FOR 1:1 SCALE
 PLEASE ENSURE YOU PRINT AT 100% SCALE WITH NO REDUCTION OR ENLARGEMENT ON YOUR PRINTER.



EN 2-6 Power Adjustment

4	No. of turns	EN Size	Shoe Position	Max. door width	Max. opening angle	Max weight
-5	2	2	2	850mm	180°	45
*0	3	3	2	950mm	180°	60
*0	4	4	1	1100mm	180°	80
+3	5	5	1	1250mm	180°	110
+8	6	6	1	1400mm	110°	120

* FACTORY PRE-SET ■ EN2 NOT SUITABLE FOR FIRE DOORS