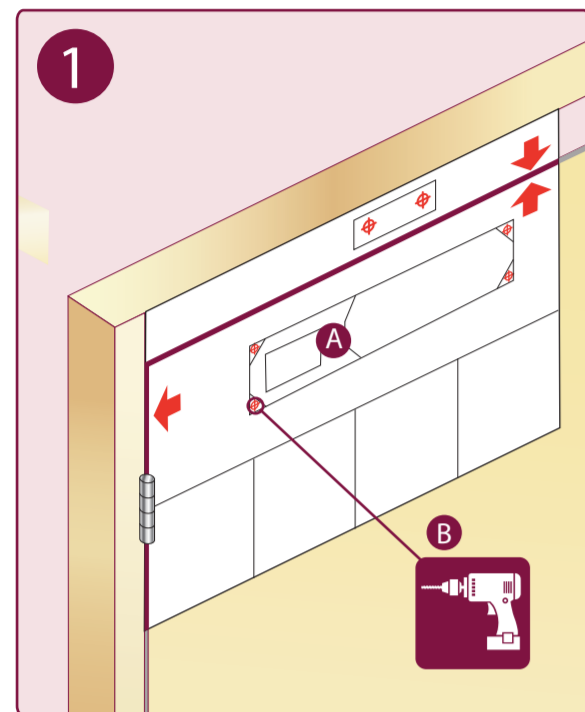
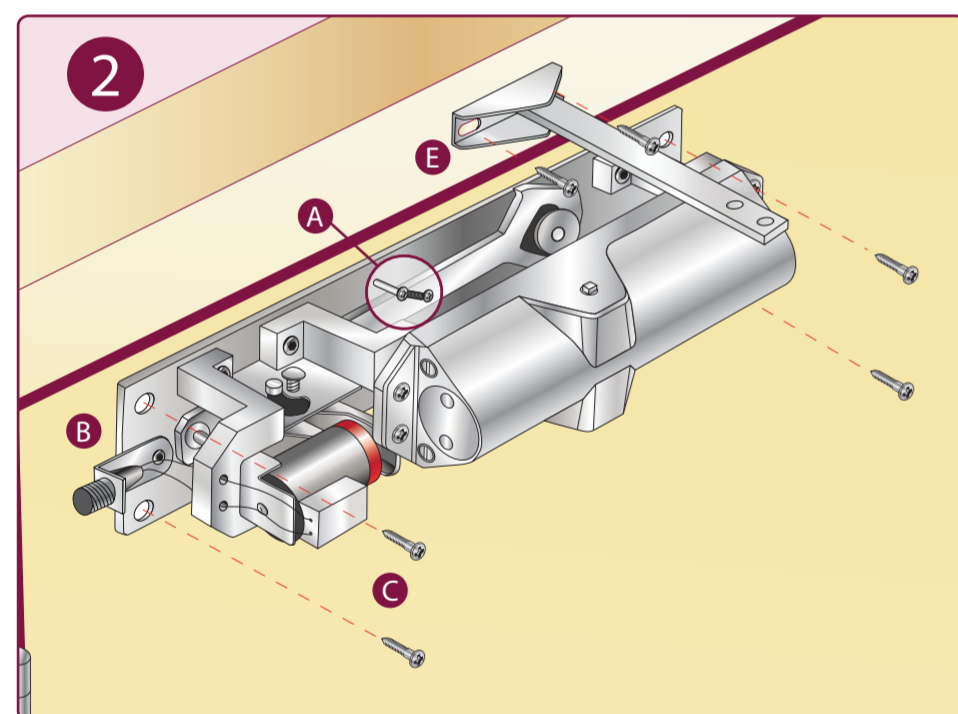




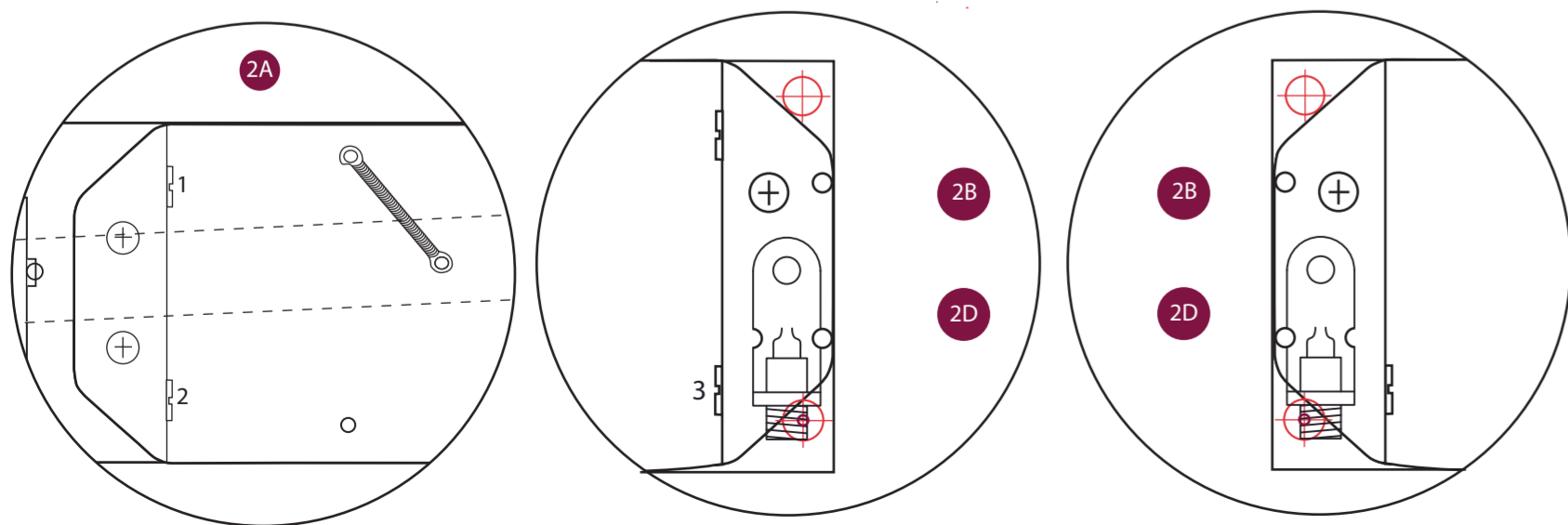
Scan this code with a QR Reader to view the installation video



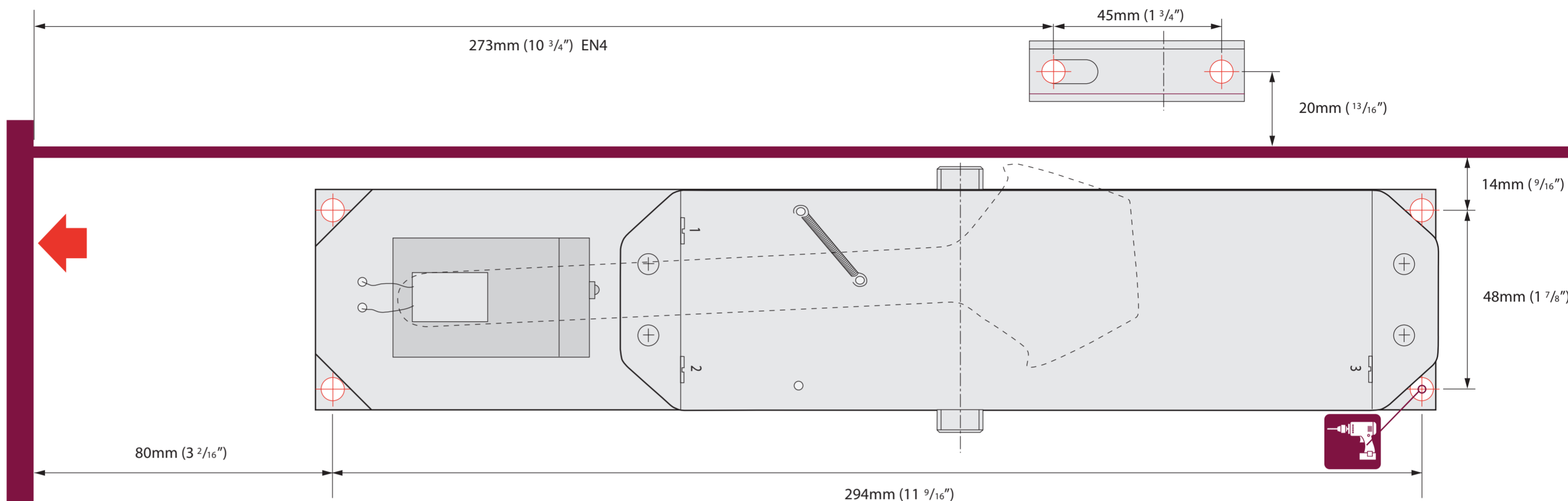
1. A. Choose the correct template.
B. Position on door and pilot drill fixing positions.



2. A. Position spring to lift the Catch Plate to the top location pin.
B. Remove locking screw on electrical connection bracket to each end of the unit. Keep for later.
C. Fix closer to door with the Electromagnet nearest to the hinge.
D. Refit the locking screw on both electrical connections.
E. Separate the arm assembly and connect to the frame with the long side towards the hinge.
CHOOSE EITHER "HOLD OPEN" OR "SWING FREE".

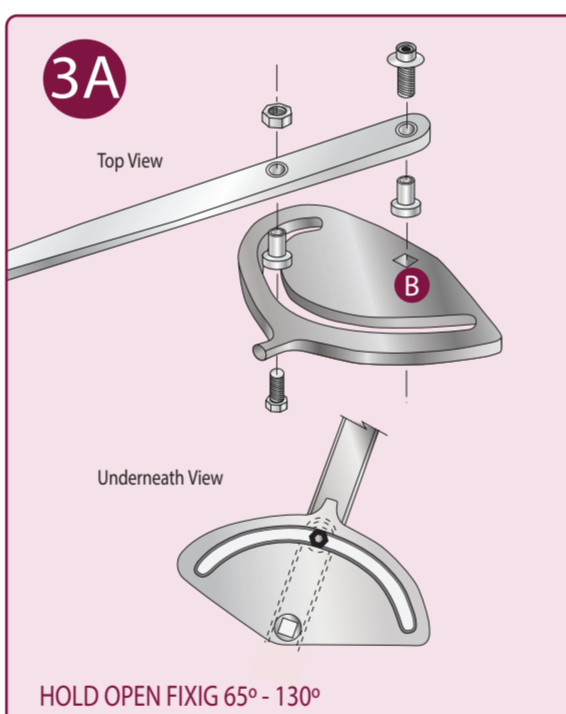


THE PINION BOLT MUST BE TIGHTENED TO 12NM

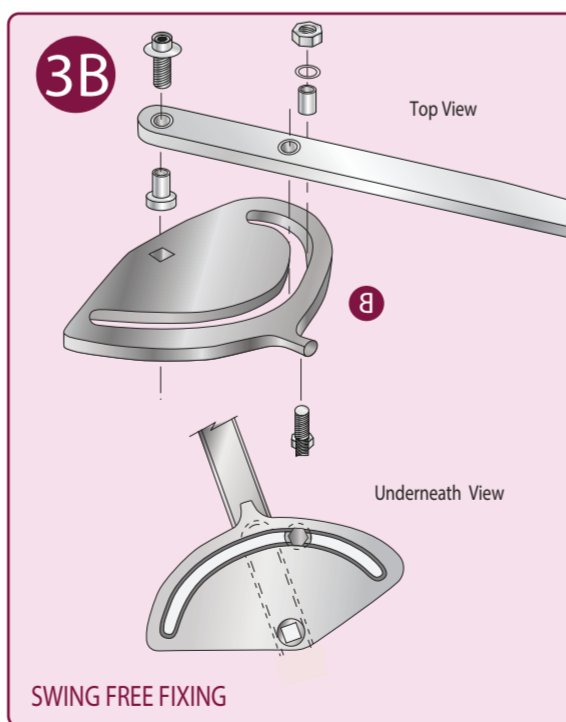


3. NB: Choose either
3a HOLD OPEN FIXING OR
3b SWING FREE FIXING

3A. HOLD OPEN
A. Insert the 2 metal bearing collars into the nylon bearing collars.
B. Push the bearing collar into both arm holes insisting that the secondary part of the arm is on the top.
C. Insert the bolt up through the Arc Wheel and through the second hole in the forearm and lock with the captive nut.

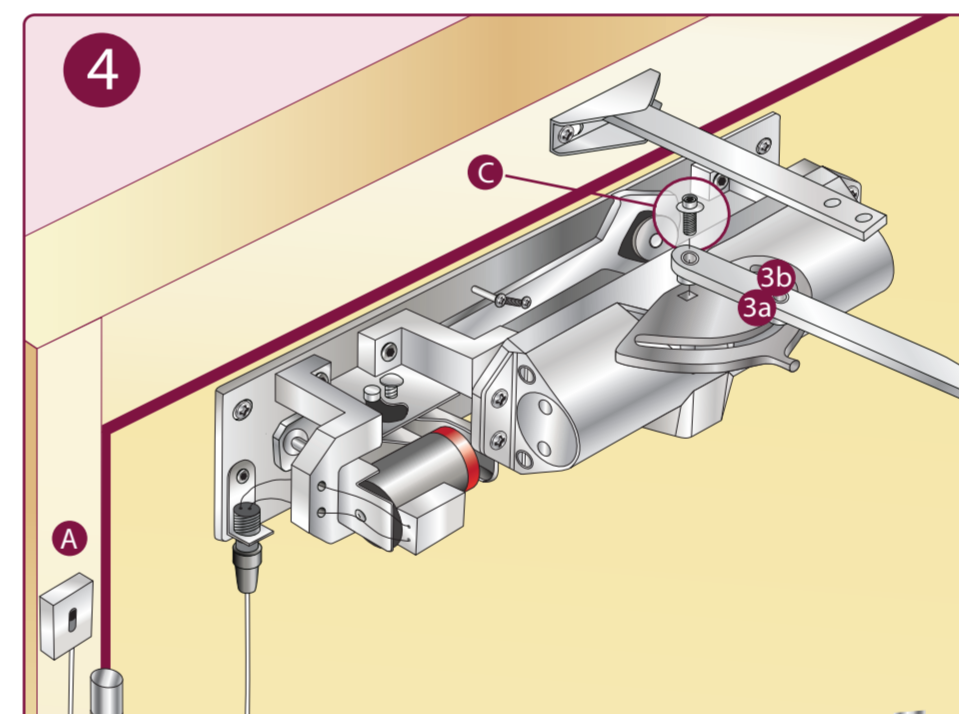


HOLD OPEN FIXIG 65° - 130°



SWING FREE FIXING

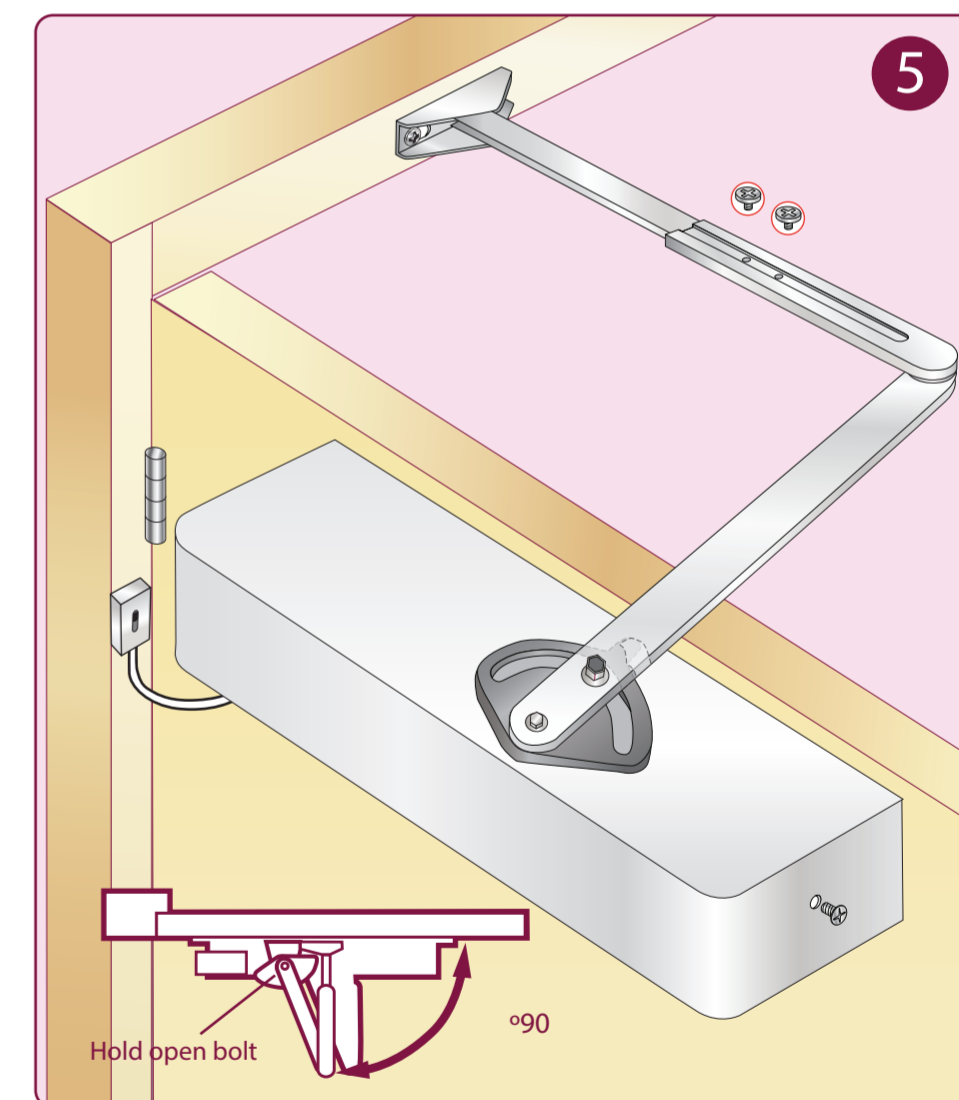
3B. SWING FREE
A. Insert a metal bearing collar into the nylon bearing collar.
B. Push the bearing collar into the first forearm hole insisting that the secondary part of the arm is on the top.
C. Insert machine bolt up through the bottom of the Arc Wheel through the spacing collar and lock with washer and bolt next to the arm (NOT THROUGH THE ARM).



4. A. Wire the electrical connections to the 24V supply on the door frame.
B. Plug in the lead and fasten. Switch on the electrical supply.
C. Position the Arm Assembly onto the Door Closer Body at approx. 90 degrees and fasten with the Long Shoulder bolt.

MAINTENANCE

All parts that are visible when the cover is on should be checked and tightened every 3 months if required.
Any worn or damaged part must be notified to the supplier upon observation.
Keeping a written log of the inspections is advisable for your guarantee.



5. A. Open door and rotate the arm through 180° to engage the hold open Catch Plate
B. Fasten secondary arm together and secure with locking screw. Switch off electricity and allow door to close.
C. Adjust secondary arm so it holds @ 90° to the frame and tighten the two locking screws.

6. SET UP AND ADJUST

A. Adjust Closing Speed valve "1". This works from fully open to 15°. Turn clockwise to slow down the closing speed.
B. Adjust Latching Speed valve "2". This works from 15° to closed. Turn clockwise to slow down the latching speed.
C. Switch on electricity and re-open the door to hold on the Catch Plate.

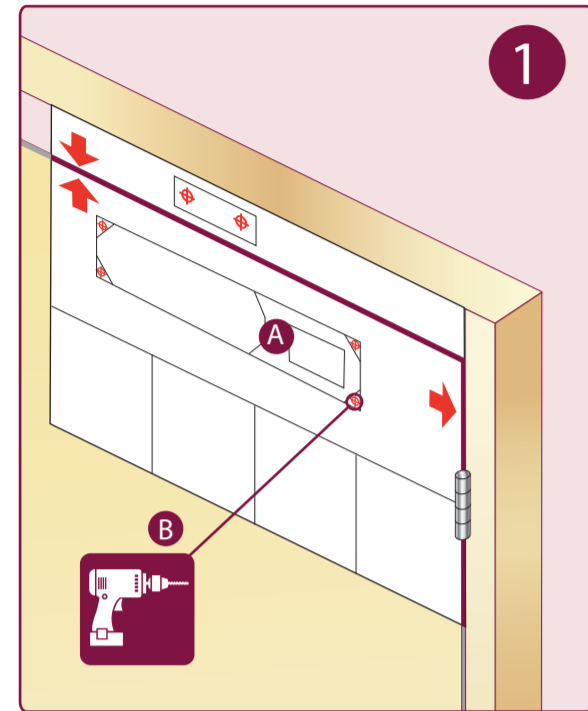
7. FINISHING

A. To adjust the hold open or swing free angle on the Arc Wheel, first loosening the second nut and turn the door as required and retighten.

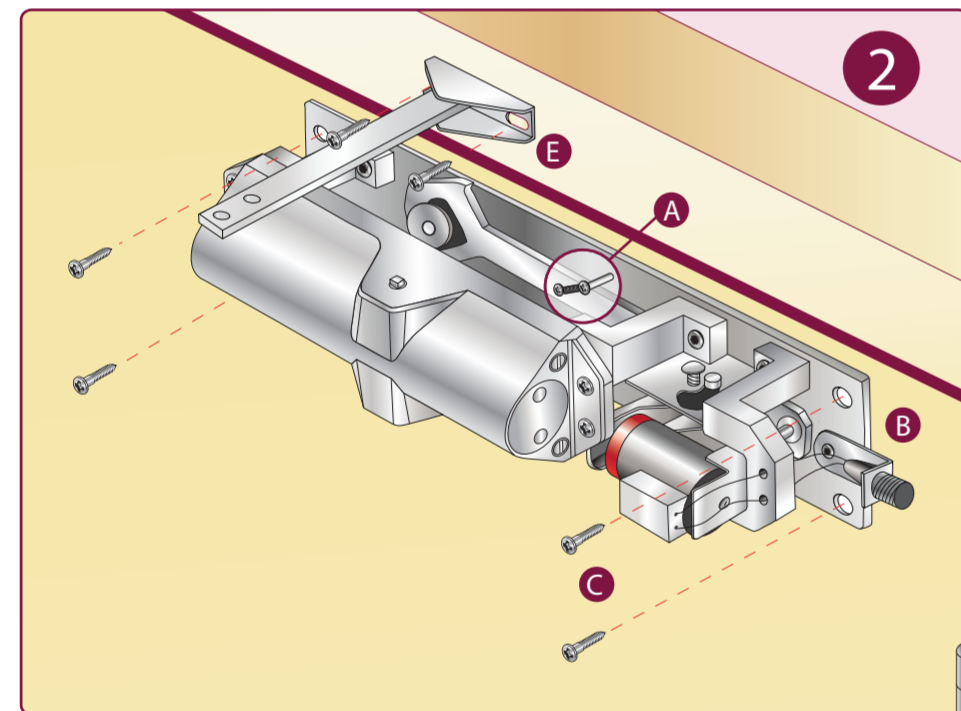
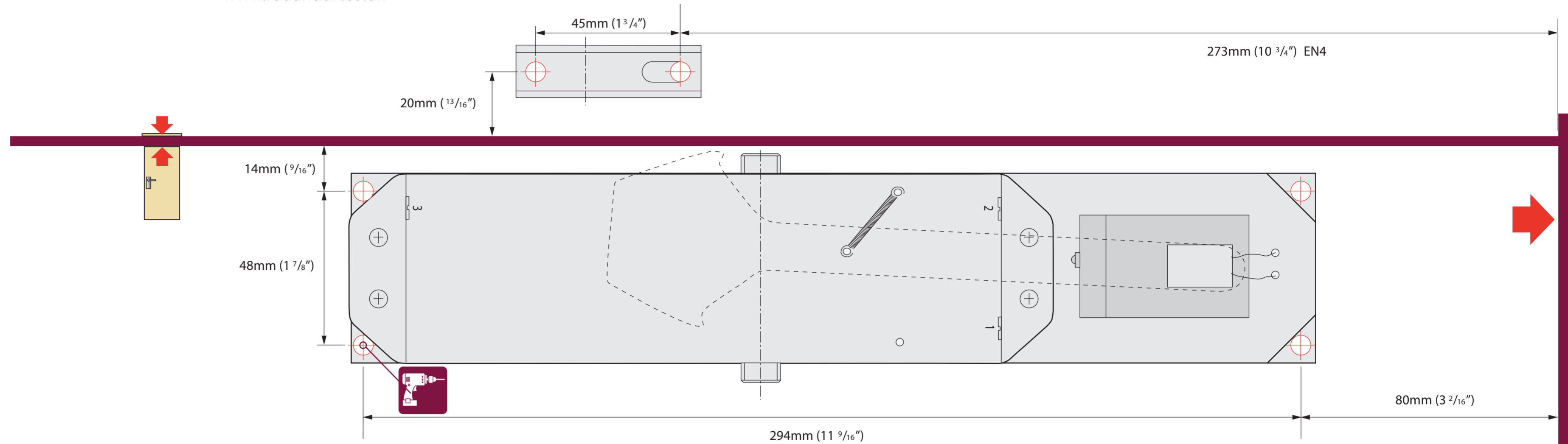


Scan this code with a QR Reader to view the installation video

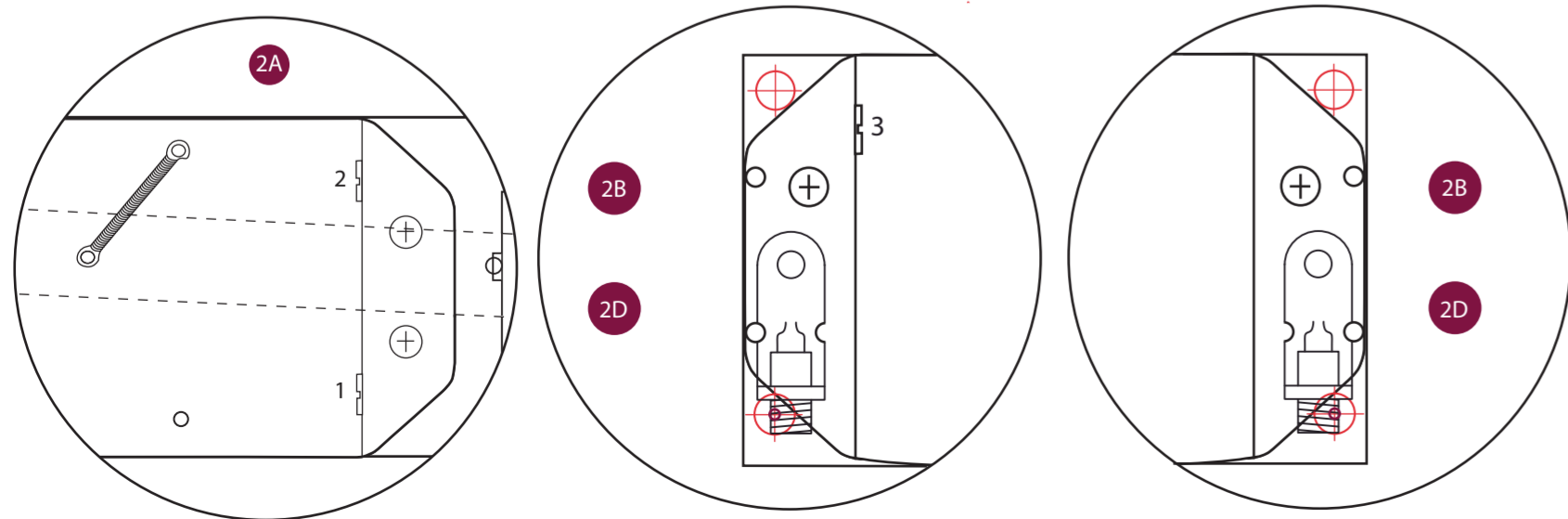
www.rutlanduk.co.uk



1. A. Choose the correct template.
 B. Position on door and pilot drill fixing positions.



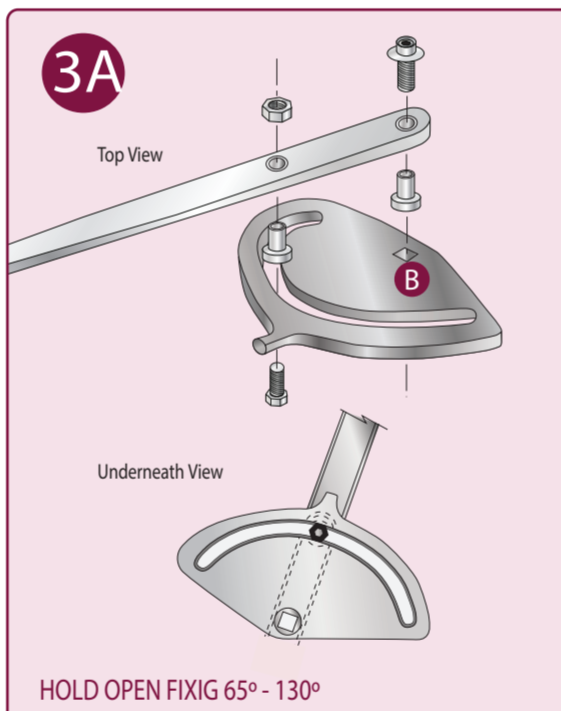
2. A. Position spring to lift the Catch Plate to the top location pin.
 B. Remove locking screw on electrical connection bracket to each end of the unit. Keep for later.
 C. Fix closer to door with the Electromagnet nearest to the hinge.
 D. Refit the locking screw on both electrical connections.
 E. Separate the arm assembly and connect to the frame with the long side towards the hinge.
 CHOOSE EITHER "HOLD OPEN" OR "SWING FREE".



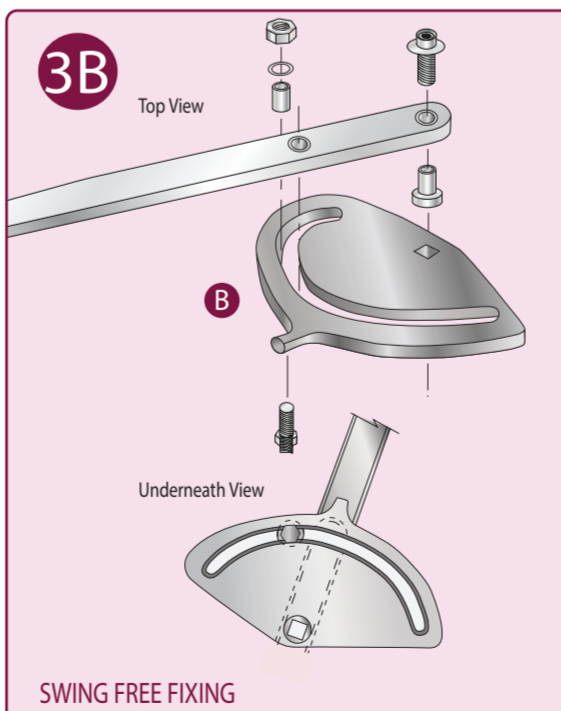
THE PINION BOLT MUST BE TIGHTENED TO 12NM

3. NB: Choose either
 3a HOLD OPEN FIXING OR
 3b SWING FREE FIXING

3A. HOLD OPEN
 A. Insert the 2 metal bearing collars into the nylon bearing collars.
 B. Push the bearing collar into both arm holes insuring that the secondary part of the arm is on the top.
 C. Insert the bolt up through the Arc Wheel and through the second hole in the forearm and lock with the captive nut.

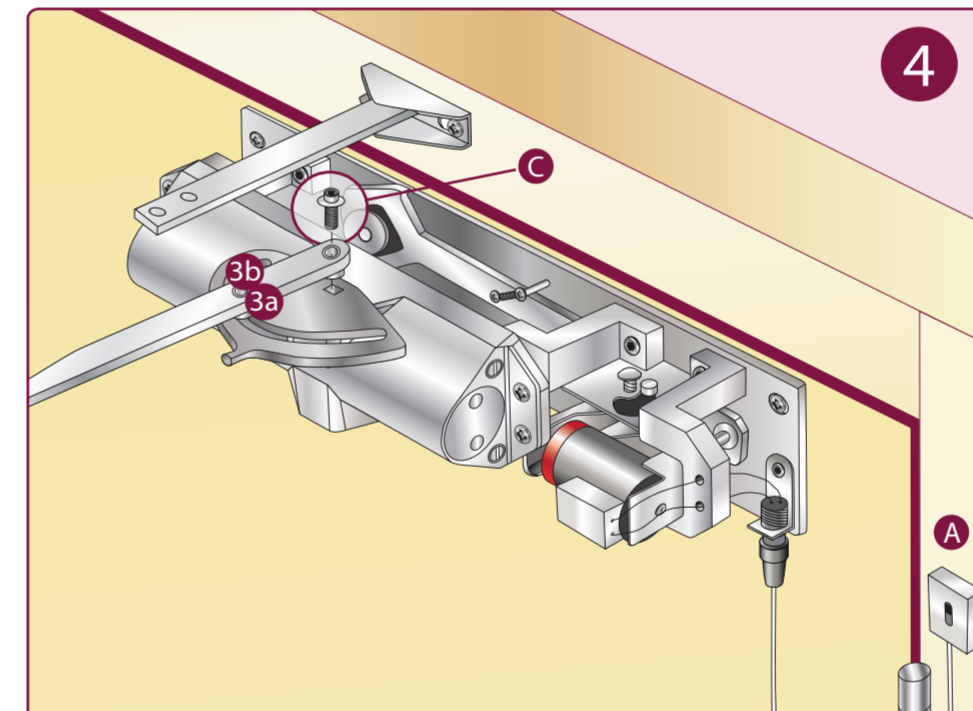


HOLD OPEN FIXIG 65° - 130°



SWING FREE FIXING

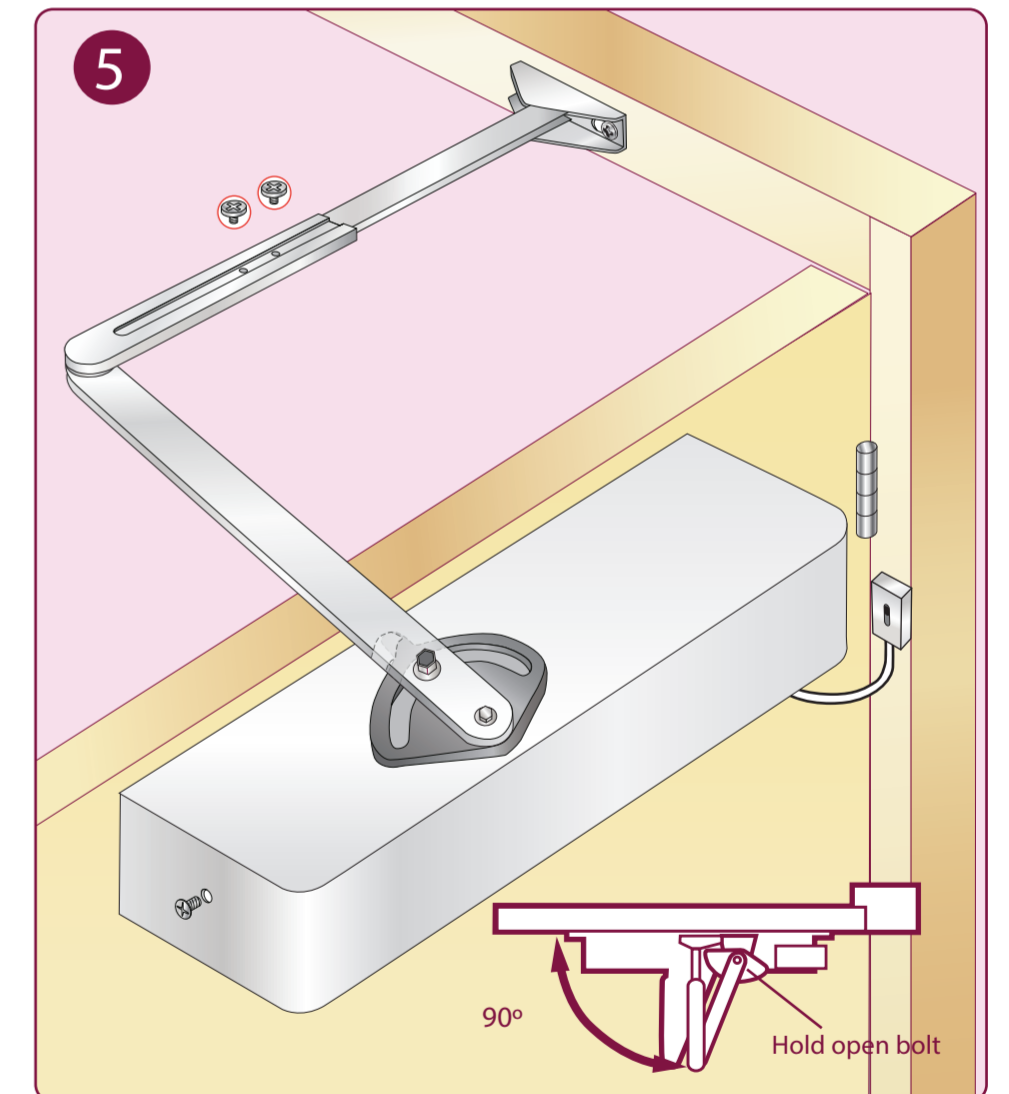
3B. SWING FREE
 A. Insert a metal bearing collar into the nylon bearing collar.
 B. Push the bearing collar into the first forearm hole insuring that the secondary part of the arm is on the top.
 C. Insert machine bolt up through the bottom of the Arc Wheel through the spacing collar and lock with washer and bolt next to the arm (NOT THROUGH THE ARM).



4. A. Wire the electrical connections to the 24V supply on the door frame.
 B. Plug in the lead and fasten. Switch on the electrical supply.
 C. Position the Arm Assembly onto the Door Closer Body at approx. 90 degrees and fasten with the Long Shoulder bolt.

MAINTENANCE

All parts that are visible when the cover is on should be checked and tightened every 3 months if required.
 Any worn or damaged part must be notified to the supplier upon observation.
 Keeping a written log of the inspections is advisable for your guarantee.



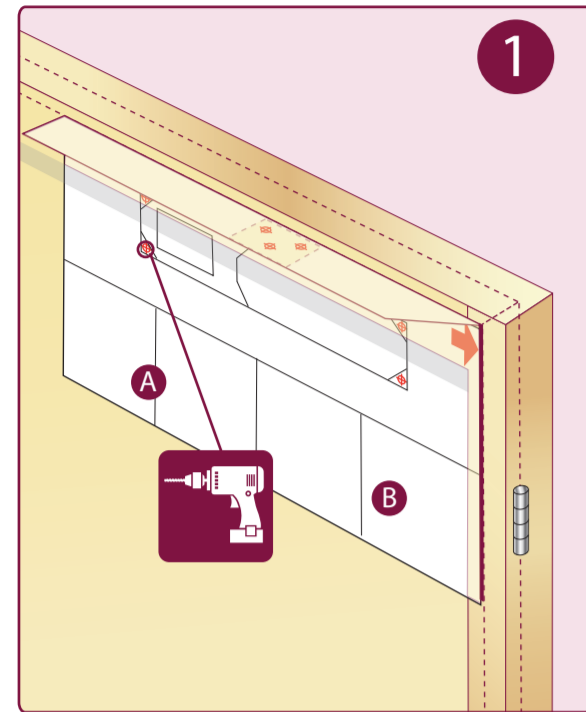
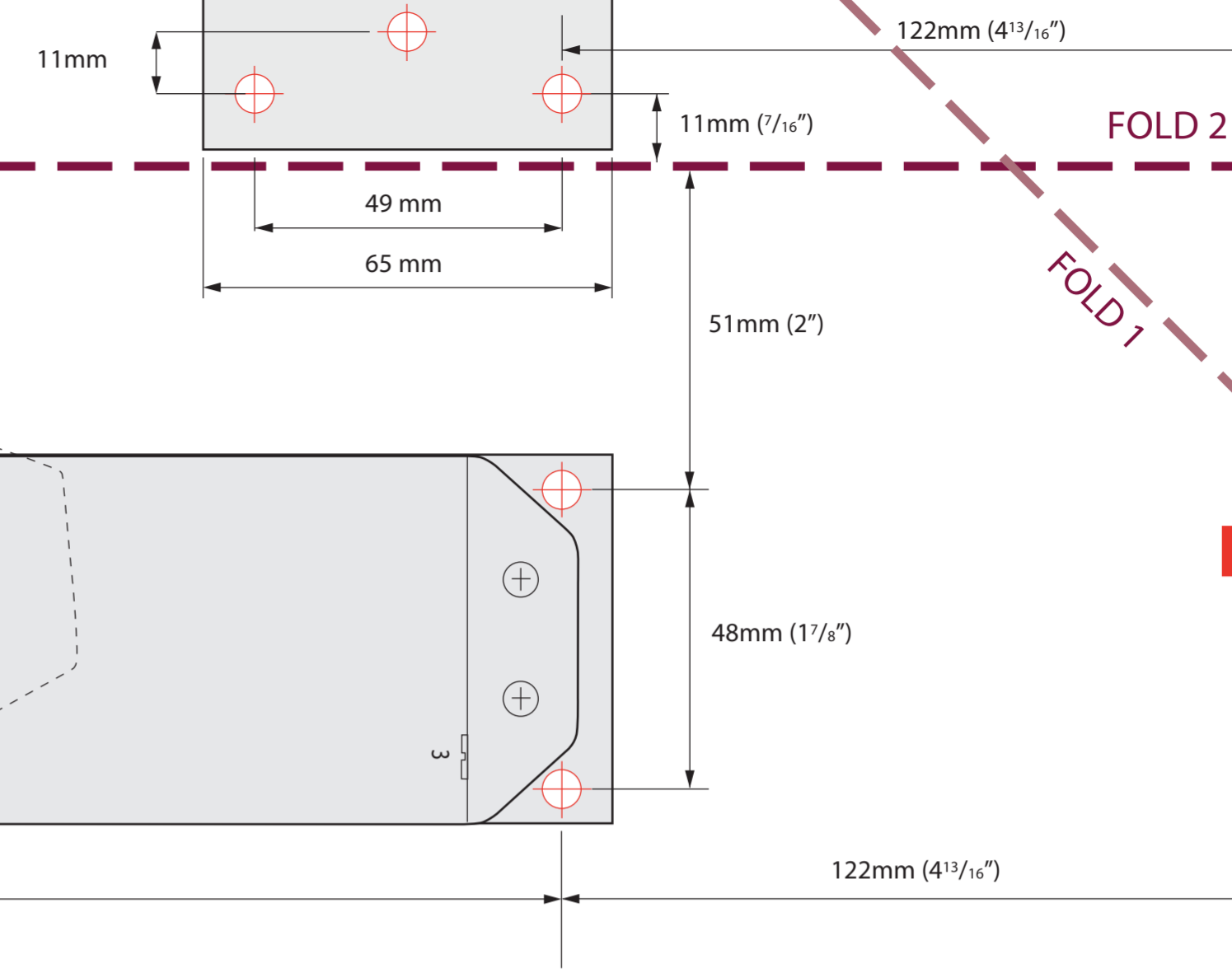
5. A. Open door and rotate the arm through 180° to engage the hold open Catch Plate
 B. Fasten secondary arm together and secure with locking screw. Switch off electricity and allow door to close.
 C. Adjust secondary arm so it holds @ 90° to the frame and tighten the two locking screws.

6. SET UP AND ADJUST

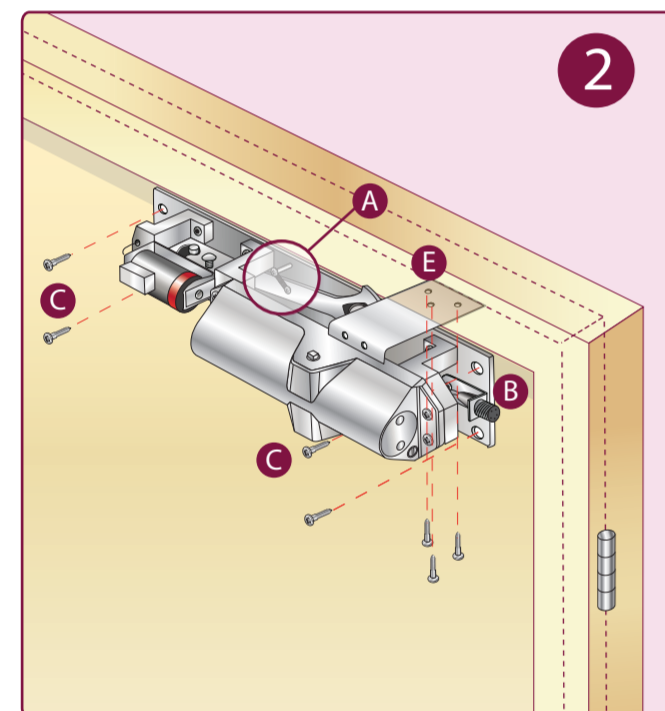
A. Adjust Closing Speed valve "1". This works from fully open to 15°. Turn clockwise to slow down the closing speed.
 B. Adjust Latching Speed valve "2". This works from 15° to closed. Turn clockwise to slow down the latching speed.
 C. Switch on electricity and re-open the door to hold on the Catch Plate.

7. FINISHING

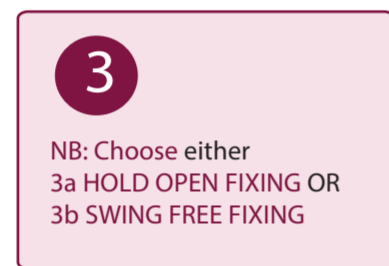
A. To adjust the hold open or swing free angle on the Arc Wheel, first loosening the second nut and turn the door as required and retighten.



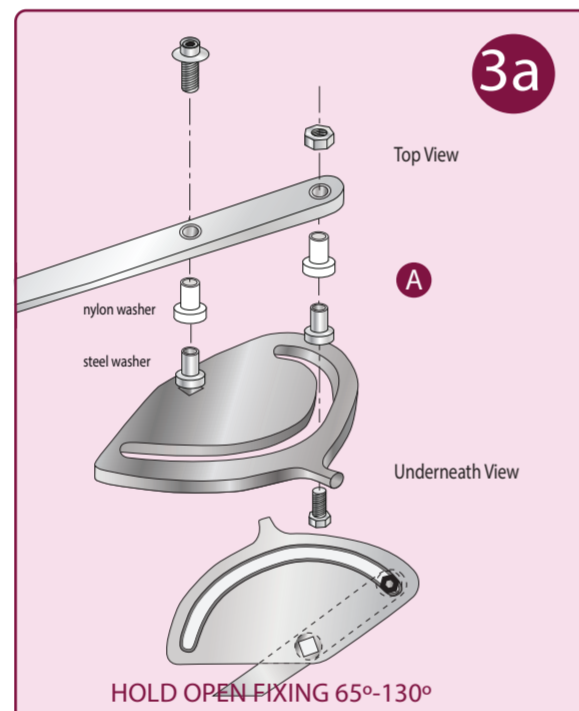
1
A. Decide on the correct template.
B. Fold on dotted lines, position on door and pilot drill fixing positions.



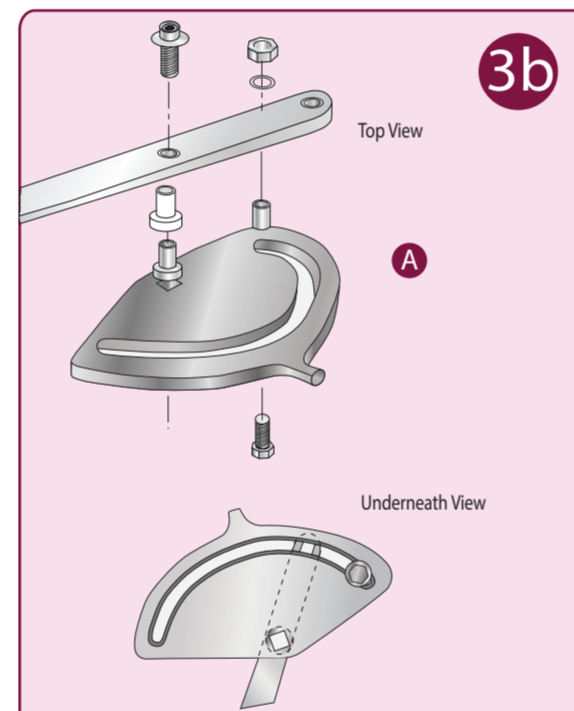
2
A. Position spring on the hold open catch plate to the top location pin.
B. Remove locking screw on electrical connection bracket to each end of the unit. Keep for later.
C. Fix closer to door with the electro magnet away from the hinge.
D. Refit the locking screw on both electrical connections.
E. Fix soffit bracket.



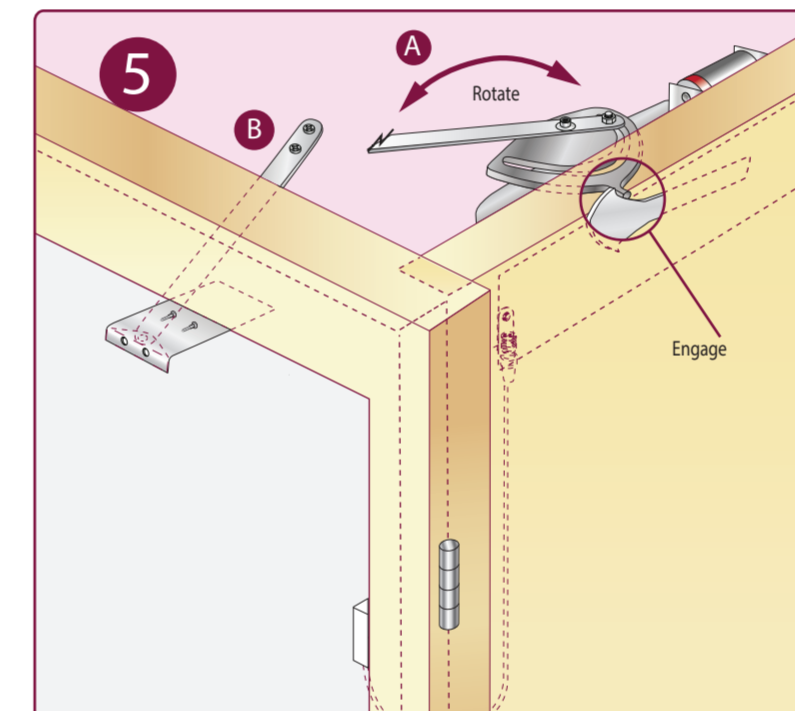
3
NB: Choose either
3a HOLD OPEN FIXING OR
3b SWING FREE FIXING



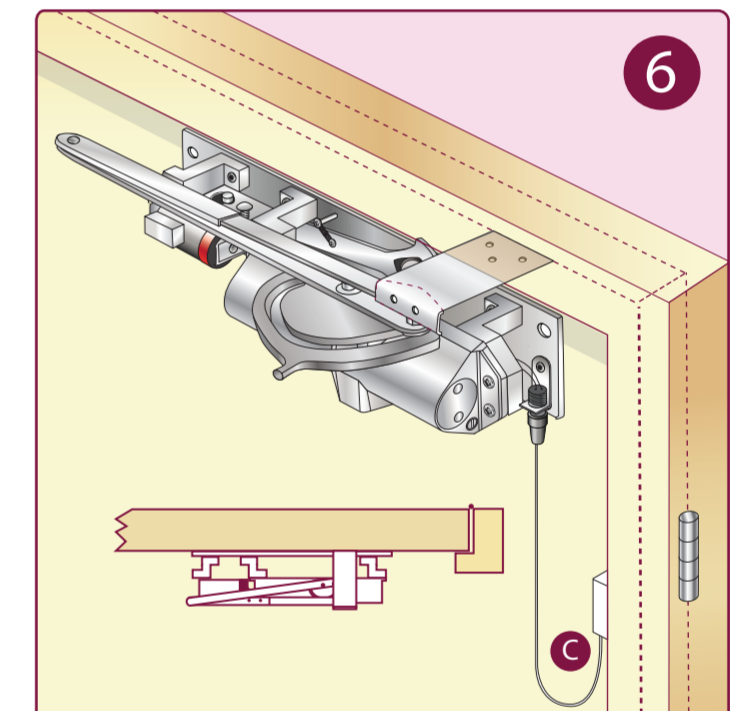
3a
A. Fasten with bolt up through Arc Wheel and 1st hole in arm, fix with lock tight nut and shouldered washer between.
HOLD OPEN FIXING 65°-130°



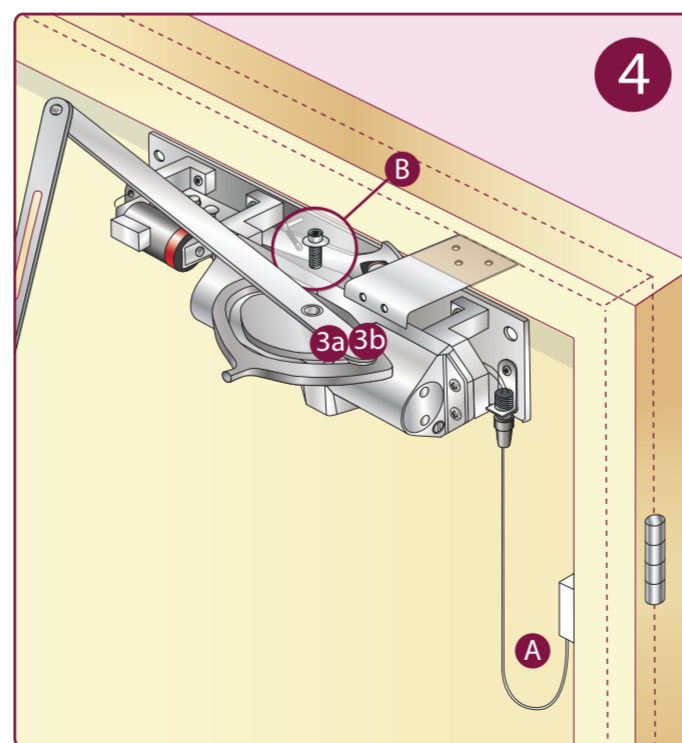
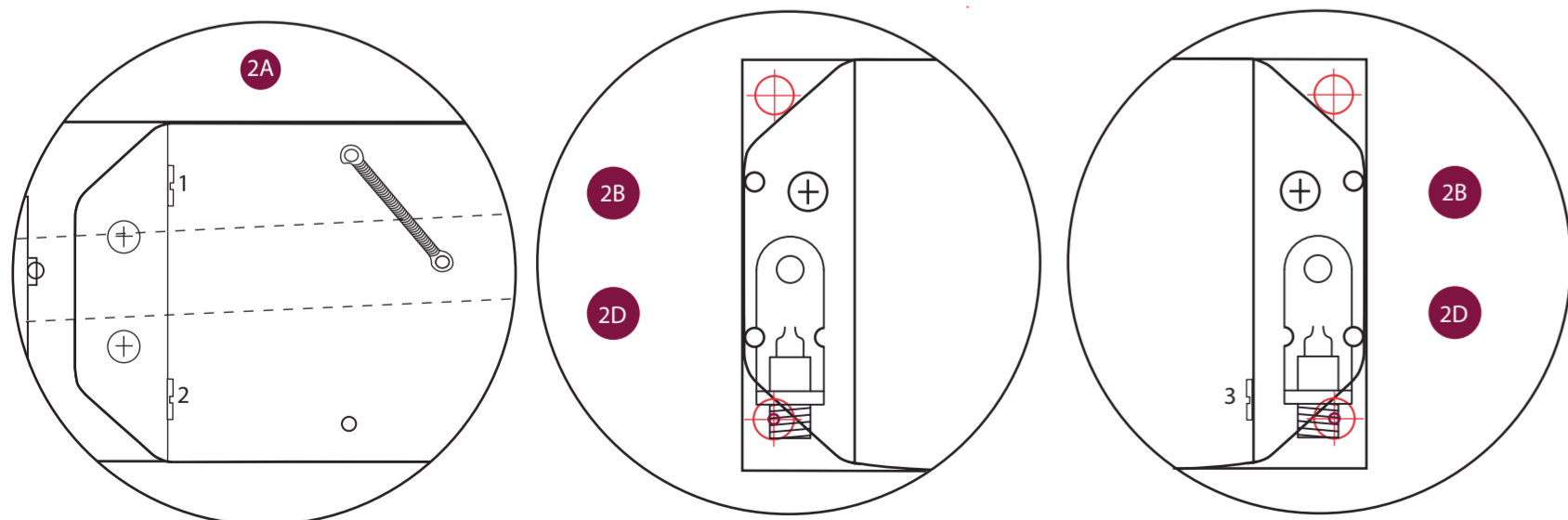
3b
A. Fasten with bolt up through the Arc Wheel and fix through the collar spacer, lock tight nut and washer between. Do not fix through arm at this point.



5
A. Open door and rotate pinion through 90° with arm and engage Arc wheel with Hold Open catch plate.
B. Separate the arm assembly and connect to the soffit bracket. Longest side of the shoe towards the hinge.
C. Fasten secondary arm together, switch off electricity so the closer shuts the door.
D. Adjust secondary arm so it holds parallel to the frame and tighten the two lock nuts.



6
SET UP AND ADJUST
A. Adjust Closing Speed valve "1". This works from fully open to 15°. Turn clockwise to slow down the closing speed.
B. Adjust Latching Speed valve "2". This works from 15° to closed. Turn clockwise to slow down the latching speed.
C. Switch on electricity and re open the door to hold on the Catch Plate. Check and adjust door closer speed and latch option.
D. Fit door closer cover by first snapping out the desired parts.



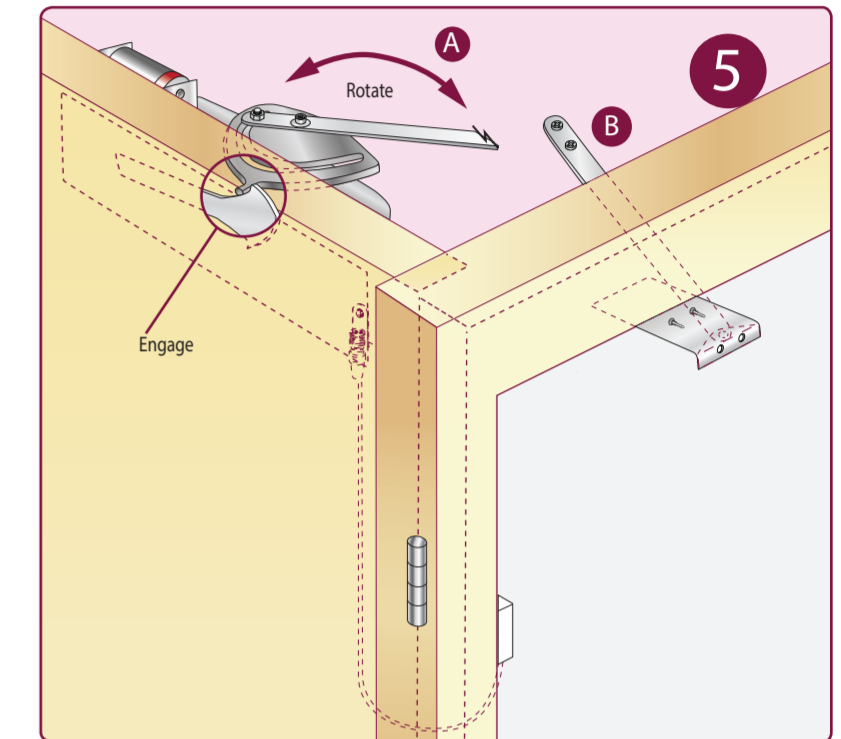
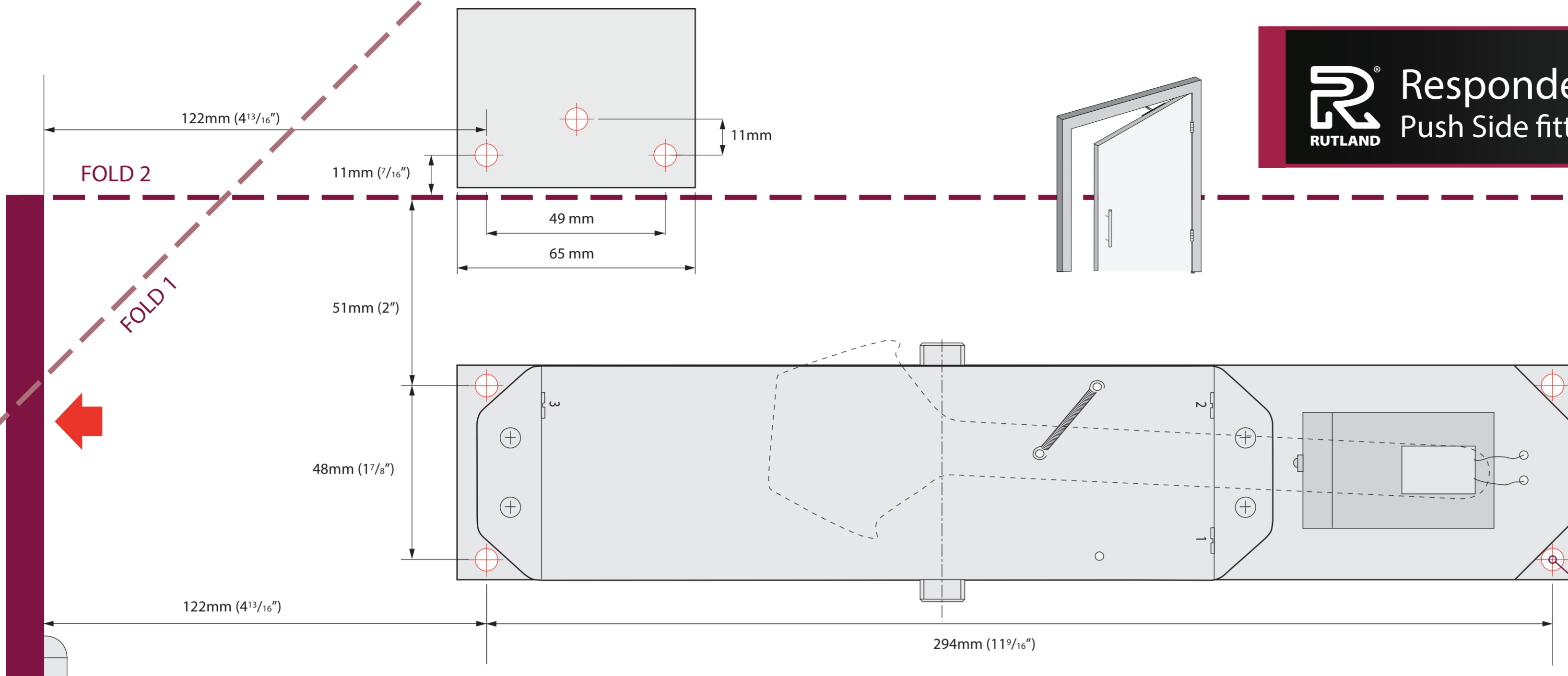
4
A. Connect the wiring as required to the junction box and plug the sockets together. Switch the electricity on.
B. Place Arc wheel on the pinion of the closer 90° to the front door facing out. Fit arm to pinion through Arc Wheel, with the long shoulder bolt, through the 2nd hole in arm with stainless shouldered washer and Nylon washer between.

MAINTENANCE
All parts that are visible when the cover is on should be checked and tightened every 3 months if required. Any worn or damaged part must be notified to the supplier upon observation.

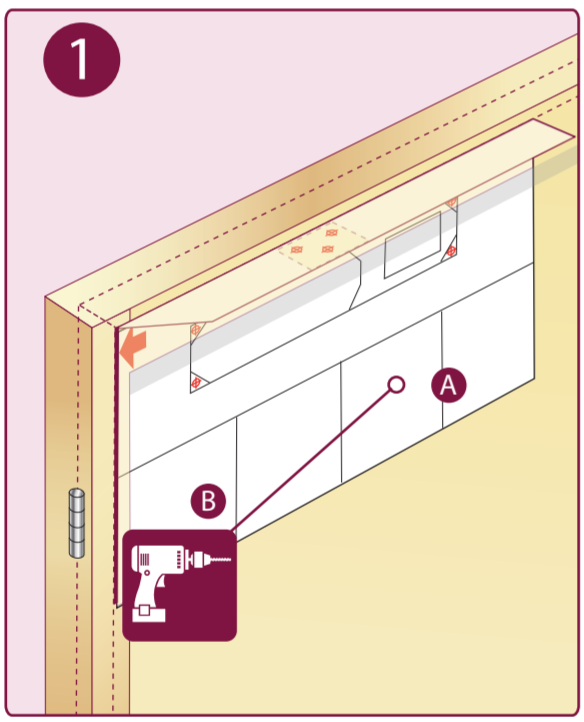
7. FINISHING
To adjust the hold open or swing free angle on the Arc Wheel, first loosening the second nut and turn the door as required and retighten.

RUTLAND Responder 24
Push Side fitting

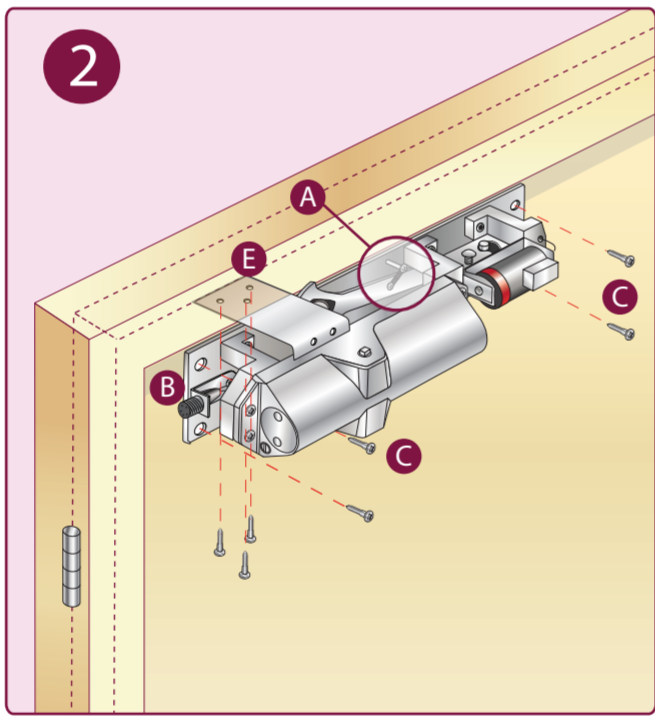
www.rutlanduk.co.uk



A. Open door and rotate pinion through 90° with arm and engage Arc wheel with Hold Open catch plate.
 B. Separate the arm assembly and connect to the soffit bracket. Longest side of the show towards the hinge.
 C. Fasten secondary arm together, switch off electricity so the closer shuts the door.
 D. Adjust secondary arm so it holds parallel to the frame and tighten the two lock nuts.

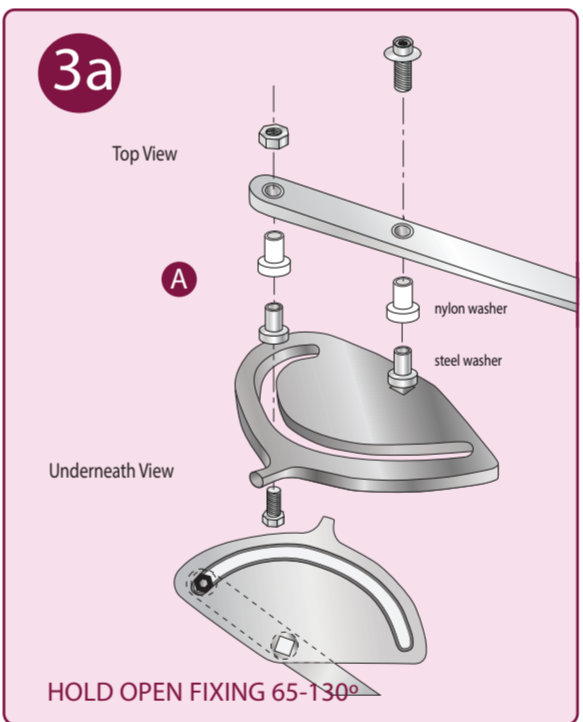


A. Decide on the correct template.
 B. Fold on dotted lines, position on door and pilot drill fixing positions.

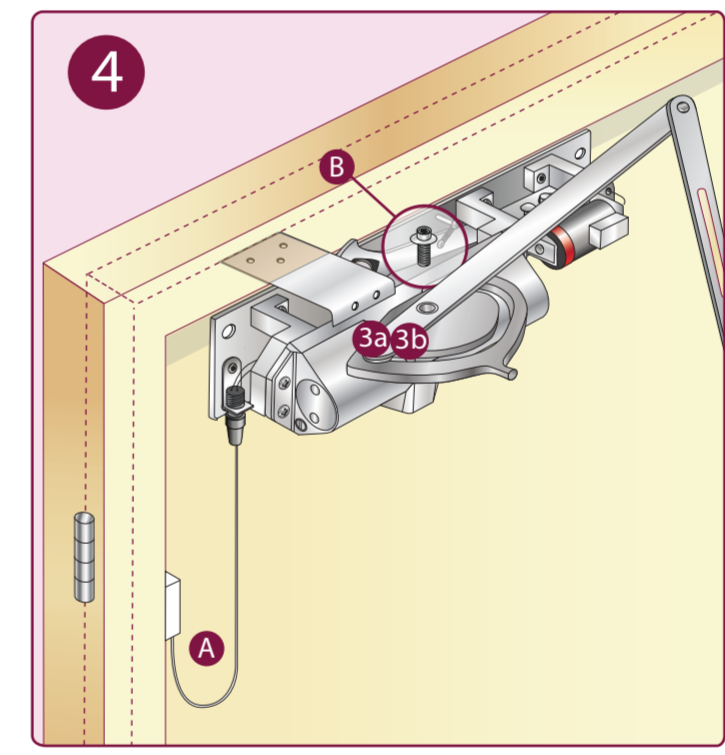


A. Position spring on the hold open catch plate to the top location pin.
 B. Remove locking screw on electrical connection bracket to each end of the unit. Keep for later.
 C. Fix closer to door with the electro magnet away from the hinge.
 D. Refit the locking screw on both electrical connections.
 E. Fix soffit bracket.

3
 NB: Choose either
 3a HOLD OPEN FIXING OR
 3b SWING FREE FIXING

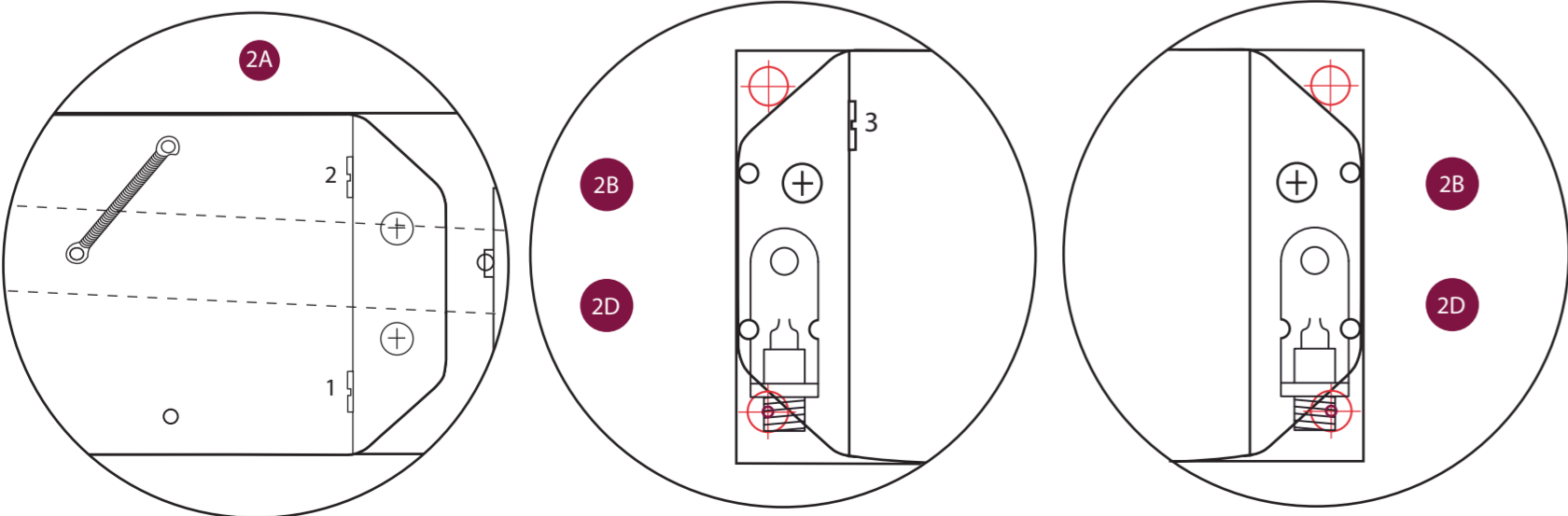


A. Fasten with bolt up through Arc Wheel and 1st hole in arm, fix with lock tight nut and shouldered washer between.



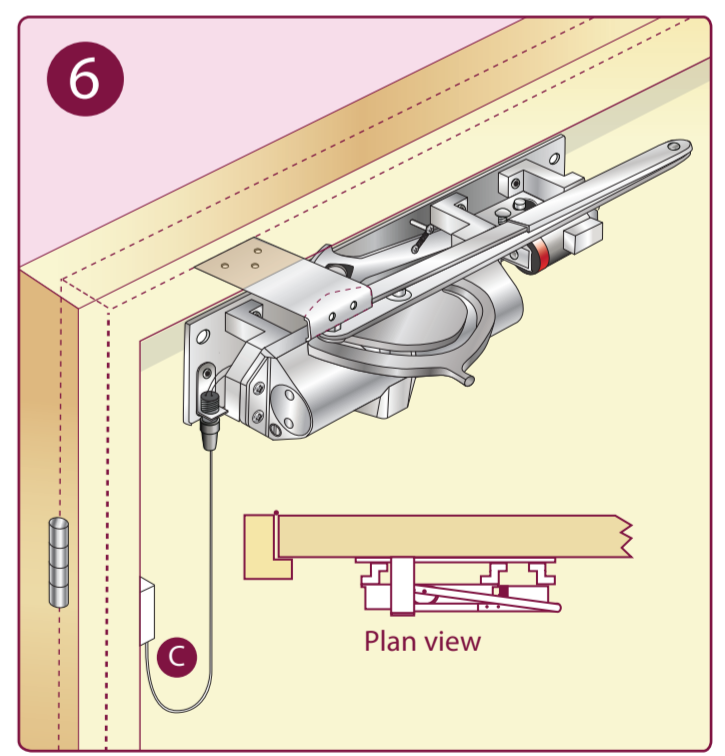
A. Connect the wiring as required to the junction box and plug the sockets together. Switch the electricity on.
 B. Place Arc wheel on the pinion of the closer 90° to the front door facing out. Fit arm to pinion through Arc Wheel, with the long shoulder bolt, through the 2nd hole in arm with stainless shouldered washer and Nylon washer between.

MAINTENANCE
 All parts that are visible when the cover is on should be checked and tightened every 3 months if required. Any worn or damaged part must be notified to the supplier upon observation.



THE PINION BOLT MUST BE TIGHTENED TO 12NM

NO PART OF THIS INSTRUCTION CAN BE COPIED OR STORED IN ANY WAY OR FORM MANUALLY OR ELECTRONICALLY WITHOUT THE FULL PERMISSION OF RUTLAND



SET UP AND ADJUST
 A. Adjust Closing Speed valve "1". This works from fully open to 15°. Turn clockwise to slow down the closing speed.
 B. Adjust Latching Speed valve "2". This works from 15° to closed. Turn clockwise to slow down the latching speed.
 C. Switch on electricity and re open the door to hold on the Catch Plate. Check and adjust door closer speed and latch option.
 D. Fit door closer cover by first snapping out the desired parts.

7. FINISHING
 To adjust the hold open or swing free angle on the Arc Wheel, first loosening the second nut and turn the door as required and retighten.